

Interpretation of Forest Areas and Tree Types

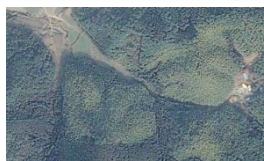
Points

- Automatic Interpretation of forest areas and tree types by satellite imagery and AI technology
- Huge cost saving comparing to conventional interpretation by human eyes
- Effective tool for adequate forestry, afforestation and disaster prevention

Overview

Learning Phase

Learning targeted
Satellite image



Interpretation result by
human eyes

Point A Pine Tree
Point B Japanese cypress
Point C Bamboo

Set of learning images



= Bamboo



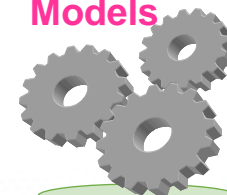
= Pine
Tree



= Japanese Cypress

Learning

Classification
Models



Tree type
Classifier

Interpretation Phase

Interpretation targeted
satellite image



Interpretation

Tree type
Classifier

Interpretation Result

