

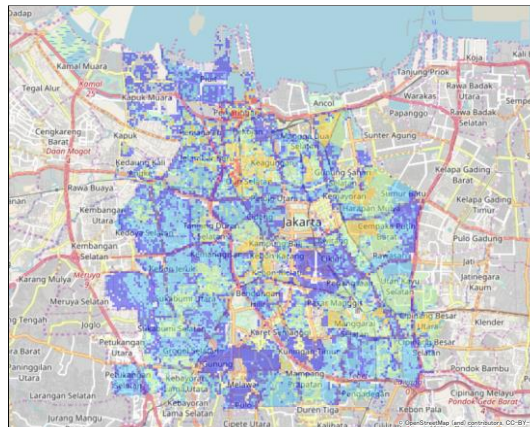
Population and Numbers of Household Estimation Data in ASEAN Region

Points

- Estimate the population and numbers of household data from satellite imagery and AI technology
- Estimate the population and numbers of household data from building density by defining residence or non-residence from satellite imagery
- Produced finely by 100m mesh unit
- The data is useful for selection of the sales items, sales promotion and store roll-out planning

Overview

Estimated Population



Estimated No. of household

