

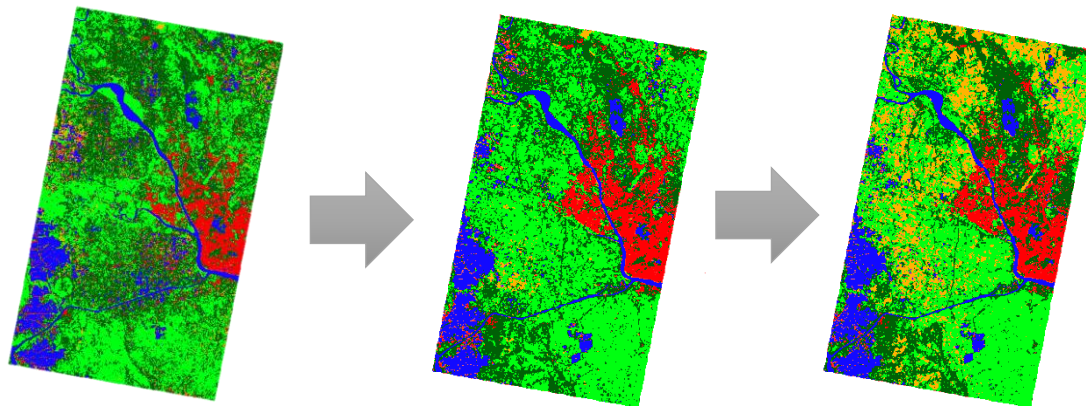
Interpretation of urbanization stages by SAR Satellite Imagery

Points

- Classify land cover as water area, glass land, forest, artifacts and bare land by SAR Satellite imagery and AI technology
- By extracting differentials of artifacts, calculate the increase ratio of urbanized area
- Effective to grasp the urbanization stages and speed of each area

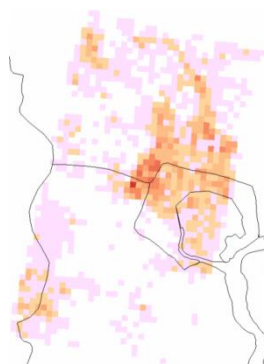
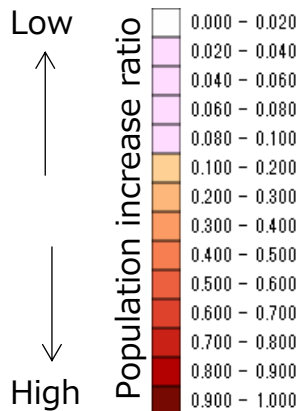
Overview

Land cover changes



Interpretation Label	Color
Water area	Blue
Glass land	Light Green
Forest/Trees	Dark Green
Artifacts	Red
Bare land	Yellow

Differentials of artifacts



Differential Analysis by mesh unit